

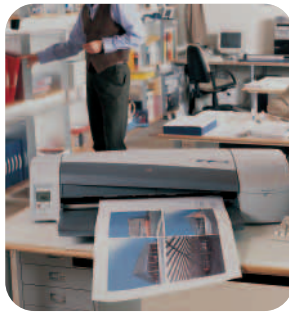


professional



affordable

data sheet



## hp designjet 100

personal multi-format color printer

Expand your in-house color printing capabilities to include a wide range of common and large-format media sizes—at a purchase price that's easy on your budget. The HP Designjet 100 is a personal color multi-format printer that produces professional, high-quality results for all your document needs, from proposals to oversize CAD drawings.

### versatile

- save time with convenient media handling system—provided by three independent paths, the standard tray to load common and custom sizes (up to A3+ or 19 inches), the separate manual feed path to load larger sizes (up to A1 or 24 inches) without unloading the standard tray and the rear path for thick media, up to 0.4 mm and 300 g/m<sup>2</sup>

- print using the media that will make you successful—supports a full range of media sizes up to 24 inches (A1), media thickness up to 0.4 mm and media weight up to 300 g/m<sup>2</sup>, media types such as coated, heavyweight coated, and glossy, and CAD media types such as Bright White, coated paper for line drawings, transparencies, natural tracing, and vellum

- built-in features help get the job done right—a comprehensive set of office printing features including number of copies, zoom, and custom sizing, as well as CAD features and color options—all from one unified printer driver

### budget-friendly

- low-cost option that expands your printing capability—print common sizes and larger sizes up to 24 inches from a single low-cost device, other printers at similar prices only print up to C (A2) size

- replace only the ink supplies you need—modular, individually replaceable supplies make color cost effective

- single solution for your entire office—print a variety of office, CAD, and oversize documents from proposals to drawings, from only one printer

- eliminates expensive outsourcing—offices with occasional large-format needs can economically print documents in-house

### professional results

- get consistently superb photo quality for all your professional documents—using specially formulated inks, the 1200 dpi writing system, and hp color layering technology, which provides a wide gamut of vivid colors, continuous tones, and smooth color transitions

- fast results—print at up to 11 pages per minute (ppm) for letter size in fast mode and 90 seconds per page for an A1-size drawing in fast mode

- print crisp, sharp lines and text—hp technology ensures precise dot placement for excellent image and line quality for all your professional documents

HP printing and imaging systems help you create powerful, professional communications easily. Printers, supplies, accessories, and services are designed together to work together and invented to meet your business needs.

# hp designjet 100

## personal multi-format color printer

LCD printer status indicator for ink supply maintenance and print messages alert

connect via EIO slot—USB 1.1- and USB 2.0-compliant and Centronics parallel IEEE 1284-compliant

rear manual feed designed to support extra thick media—up to 0.4 mm and 300 g/m<sup>2</sup>—up to A1 size or 24 in

modular ink system with four independently replaceable ink cartridges so you replace only the ink colors you need



cancel-print button immediately terminates print jobs, saving ink and saving time

standard media tray handles media up to A3+ or 19 inches and can accommodate up to 100 sheets

small footprint allows you to place printer on your desktop or common work area

front manual feed handles media up to A1 or 24 inches

### the multi-format color solution for SOHO

- multipurpose printing—3 x 5.6 inch to 13 x 19 inch from automatic paper tray and up to 24 x 63.9 inch from manual front feed
- versatile printing—printer optimized to provide excellent office and CAD output—precise dot placement ensures crisp and sharp lines and text as well as graphic output—photo quality achieved thanks to 1200 dpi writing system and hp color layering technology
- flexible printing—support for a full range of media sizes (up to A1), thickness (up to 0.4 mm), and types: coated, heavyweight coated, glossy, and CAD medias like bright white, transparencies or natural tracing paper
- fast printing—11 ppm for letter size in Fast mode and 90 seconds per page for A1 in Fast mode
- professional results—using 1200-dpi writing system and hp color layering technology
- smart office features—including number of copies, zoom, and custom sizing as well as CAD features and color options via one unified printer driver
- low operation cost—modular, individually replaceable supplies make color cost effective

## for the small office that needs a multi-format printing solution

### the right printer at the right price

HP introduces the first personal multi-format color printer that combines large-format and A3/A2 capability in a single device. Now you can own a multi-format color printer that is easy on your budget—its low purchase price and the low cost of operation combine to make owning the HP Designjet 100 both budget-friendly and cost-effective.

### media flexibility

Expand your in-house color printing capabilities to include a wide range of media sizes. The HP Designjet 100 produces professional, high-quality results for all your document needs, from proposals to line drawings to oversize printing. The three independent media paths provide media versatility and flexibility. The standard media tray holds up to 100 sheets and handles common and custom sizes (up to A3+, or 19 inches), and a separate manual-feed path conveniently accommodates larger sizes (up to A1 or 24 inches). The HP Designjet 100 supports a full range of printing materials and supports media thickness up to 0.4 mm. Print large-size documents on a wide variety of media substrates including coated and glossy papers, plus a full range of CAD papers and films.

HP offers a wide range of media options for all your professional output. And because we design our media and ink supplies to work together with HP printers, you're guaranteed the award-winning results that only come from Hewlett-Packard.

### reliable printing from hp

Using HP printing technology, the HP Designjet 100 delivers professional, photo-quality printing for color renderings and crisp, clear output for line drawings. The printer delivers the professional performance you expect from HP by printing at speeds up to 11 ppm for letter size in Fast mode and 90 seconds per page for an A1-size drawing in Fast mode. The Designjet 100 uses HP Color Layering Technology to produce crisp, concise lines, continuous tone, smooth transitions, and a wide color gamut with resolution up to 1200 dpi. Smart printing features control the interaction between the printheads, ink cartridges, and print media to optimize print quality. And, by using a modular ink delivery system (four separate ink cartridges), durable printheads, and a print mode that conserves ink, the printer also saves you time and money by reducing user intervention, extending supply life, and allowing you to replace only the necessary components.

For added versatility, AutoCAD™ drivers provide the capability to print AutoCAD files in addition to business documents and images. Through the ADI driver, users can produce complex documents with thick, stylistic lines, a variety of line widths, line ends and joins, annotations, and raster patterns.

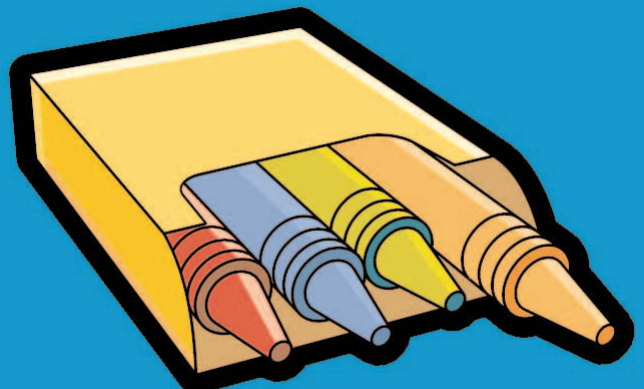
### award-winning support from hp

HP provides you with a variety of support options to assist you in the setup and maintenance of the HP Designjet 100 printer. Use HP's expert knowledge to help you make the most of your printer and ensure your equipment is running at peak efficiency. Start with a one-year next business day exchange warranty backed by phone support from the award-winning HP Customer Care. To further guarantee trouble-free operation, to maximize the potential of your HP Designjet printer, and to customize the printer for your unique business profile, consider upgrading service and support options.

### maximize your returns with hp services

HP offers a comprehensive set of services and acquisition options that provide predictable cost structures and business efficiency gains—financing, user training, deployment strategies, regularly scheduled supplies and printer maintenance, and complete hardcopy environment management are available through HP Consulting, HP Outsourcing, HP Support, HP Education, and HP Finance. To find out more information go to the HP Services Web site at [www.hp.com/hps](http://www.hp.com/hps)

the hp designjet 100 color printer  
efficiently delivers high performance  
wide and large format printing to  
meet a wide range of business  
formats. This versatile printer works  
on a wide variety of media to  
ensure that your business can  
quickly and easily create powerful,  
effective communications or narrow  
and large check prints



## technical specifications

### hp designjet 100

#### general features

Print technology: HP Color Thermal Inkjet  
Low-ink indicator and printer status LCD

#### print performance\*

Fast mode A4: 11 ppm  
Fast mode D/A1: size 90 sec.

\* Maximum mechanical printing times

#### paper handling

Tray 1: 100-sheet capacity  
Front manual single-sheet fed: up to A1+  
Rear path: for thick media up to 0.4 mm and media weight up to 300 g/m<sup>2</sup>

#### media types

Paper: plain, coated, natural tracing, two-sided brochure paper, photo, heavyweight  
Transparencies: vellum, translucent bond

#### media sizes

Letter, legal, tabloid, executive, C, C+, D, D+, (A4, A3, A2, A1, A1+); envelopes\*\*  
Custom sizes: 3 x 5.6 in to 24.6 x 64 in

\*\* Through the driver

#### resolution

1200 by 600 dpi

#### memory

16 MB memory

#### connectivity

USB 1.1 (Microsoft® Windows 98 2nd edition, Me, 2000 and XP), USB 2.0 compliant,  
Centronics Parallel IEEE-1284 compliant (ECP), 1 EIO slot

#### drivers

ADI driver release for AutoCAD users (for Windows only), Microsoft Windows drivers for office functionality

#### printer language

PCL3GUI RGB-24 bit contone

#### operating systems supported

Microsoft Windows 95, 98, Me, NT® 4.0, 2000 and XP

#### network compatibility (via optional hp jetdirect print servers)

Microsoft Windows, NT 4.0 Server, 2000 Server, 2002 Server, Novell

#### system requirements, minimum

Windows 95, 98, Pentium® I, 133 MHz, 48 MB RAM, 300 MB available hard disk space; Windows NT, Pentium II, 300 MHz, 64 MB RAM, 400 MB available hard disk space; Windows 2000, Pentium II, 300 MHz, 128 MB RAM, 400 MB available hard disk space; Windows XP, Pentium III, 733 MHz, 128 MB RAM, 400 MB available hard disk space

#### dimensions (w by d by h)

41 by 15.8 by 8.7 in (1042 by 400 by 220 mm)

#### weight

46.3 lb, (21 kg)

#### environmental ranges

Operating temperature range, recommended: 59 to 86° F (15 to 30° C)  
Operating temperature: 41 to 104° F (5 to 40° C)  
Storage temperature: -4 to 131° F (20 to 55° C)  
Operating humidity range, recommended: 25 to 75% RH  
Operating humidity: 20 to 80% RH  
Storage humidity: 20 to 80% RH

#### acoustics

Level of sound power per ISO 9296, expressed in bels: 6.2 B(A)  
Level of sound pressure per ISO 9614-1, expressed in decibels: 50 dB(A)  
Level of sound pressure per ISO 9614-1, standby mode, expressed in decibels: 37 dB(A)

#### power requirements

Input voltage 100 to 240 VAC autoringing, 50/60 Hz, 2A max  
ENERGY STAR® compliant

#### power consumption

Printing: 47.5 watts  
Idle: 17.9 watts  
Standby: 13.9 watts

#### warranty (varies according to region)

One-year warranty includes phone support from Monday to Friday during business hours and next-business-day exchange

#### what's in the box

HP Designjet 100 printer, power cord, USB cable, printheads (4), print cartridges (4), input/output tray, macro installer, drivers CD, user documentation CD, setup poster, Quick Start Guide, instructions

## ordering information

### number description

C7796A HP Designjet 100 printer

### service and support (varies according to region)

U3423A/E HP Supportpack, 3-year, express exchange

This should be purchased together with the HP Designjet printer, at latest 180 days after purchase of the printer. For more support services please visit: [www.designjet.hp.com](http://www.designjet.hp.com)

### accessories

Q1246A Stand & bin

### supplies

#### cartridges

C4844A HP 10 Black ink cartridge  
C4836A HP 11 Cyan ink cartridge  
C4837A HP 11 Magenta ink cartridge  
C4838A HP 11 Yellow ink cartridge

#### printheads

C4810A HP 11 Black printhead  
C4811A HP 11 Cyan printhead  
C4812A HP 11 Magenta printhead  
C4813A HP 11 Yellow printhead

#### media

Q1970A HP proofing paper, glossy, B+, 50 sheets  
Q1963A HP proofing paper, glossy, C+, 50 sheets  
Q1964A HP proofing paper, glossy, D+, 50 sheets  
C7884A HP proofing paper, semi-gloss, B+, 50 sheets  
Q1967A HP proofing paper, matte, B+, 100 sheets  
C6039A HP premium photo paper, A, 15 sheets  
C6979A HP premium photo paper, A, 50 sheets  
C6040A HP premium photo paper, A4, 15 sheets  
C6059A HP premium photo paper, A3, 20 sheets  
C6058A HP premium photo paper, B, 20 sheets  
Q1961A HP coated paper, C+, 100 sheets  
Q1962A HP coated paper, D+, 100 sheets  
51634Y HP premium paper, A, 200 sheets  
51634Z HP premium paper, A4, 200 sheets  
C1855A HP premium paper, B, 100 sheets  
C1856A HP premium paper, A3, 100 sheets  
C1852A HP premium heavyweight coated paper, A, 100 sheets  
C1853A HP premium heavyweight coated paper, A4, 100 sheets  
C6955A HP brochure and flyer paper, matte, A, 50 sheets  
C6817A HP brochure and flyer paper, glossy, A, 50 sheets  
C6956A HP brochure and flyer paper, matte, A4, 50 sheets  
C6818A HP brochure and flyer paper, two-sided, glossy, A4, 50 sheets  
C6820A HP brochure and flyer paper, two-sided, glossy, B, 50 sheets  
C6821A HP brochure and flyer paper, two-sided, glossy, A3, 50 sheets  
C7007A HP everyday photo paper, matte, A, 100 sheets  
C6983A HP everyday photo paper, two-sided, semi-gloss, A, 25 sheets  
C6984A HP everyday photo paper, two-sided, semi-gloss, A4, 25 sheets  
C7006A HP everyday photo paper, two-sided, semi-gloss, A4, 25 sheets  
C1824A HP bright white inkjet paper, A, 500 sheets  
C5976B HP bright white inkjet paper, A, 250 sheets  
C1825A HP bright white inkjet paper, A4, 500 sheets  
C5977A HP bright white inkjet paper, A4, 200 sheets  
C1857A HP bright white inkjet paper, B, 200 sheets  
C1858A HP bright white inkjet paper, A3, 200 sheets  
C7028A HP premium plus inkjet transparency film, A, 50 sheets  
C7030A HP premium plus inkjet transparency film, A, 20 sheets  
C3835A HP premium plus inkjet transparency film, A4, 50 sheets

### network

J6057A HP Jetdirect 615n Fast Ethernet internal print server

## HP PCs use genuine Windows Operating Systems [www.microsoft.com/piracy/howtotell](http://www.microsoft.com/piracy/howtotell)

For more information on the HP Designjet 100, visit our Web site at [www.hp.com](http://www.hp.com) and click on products and services. Here you will find information on products, supplies, and accessories for all your computing needs. HP printers, personal computers, supplies, and accessories are available at authorized HP resellers worldwide.

ENERGY STAR is a U.S. registered service mark of the United States Environmental Protection Agency. As an ENERGY STAR partner, HP has determined that this product meets the guidelines for energy efficiency. Apple, AppleTalk, and Macintosh are trademarks of Apple Computer, Inc. registered in the USA, and other countries. Microsoft, Windows, and Windows NT are registered trademarks of Microsoft Corporation in the USA, and other countries. All other brand and product names are trademarks or registered trademarks of their respective companies. The information contained in this document is subject to change without notice. HP makes no warranty of any kind with respect to this information. HP specifically disclaims the implied warranty of merchantability and fitness for a particular purpose. HP shall not be liable for any direct, indirect, incidental, consequential, or other damage alleged in connection with the furnishing or use of this information.

